



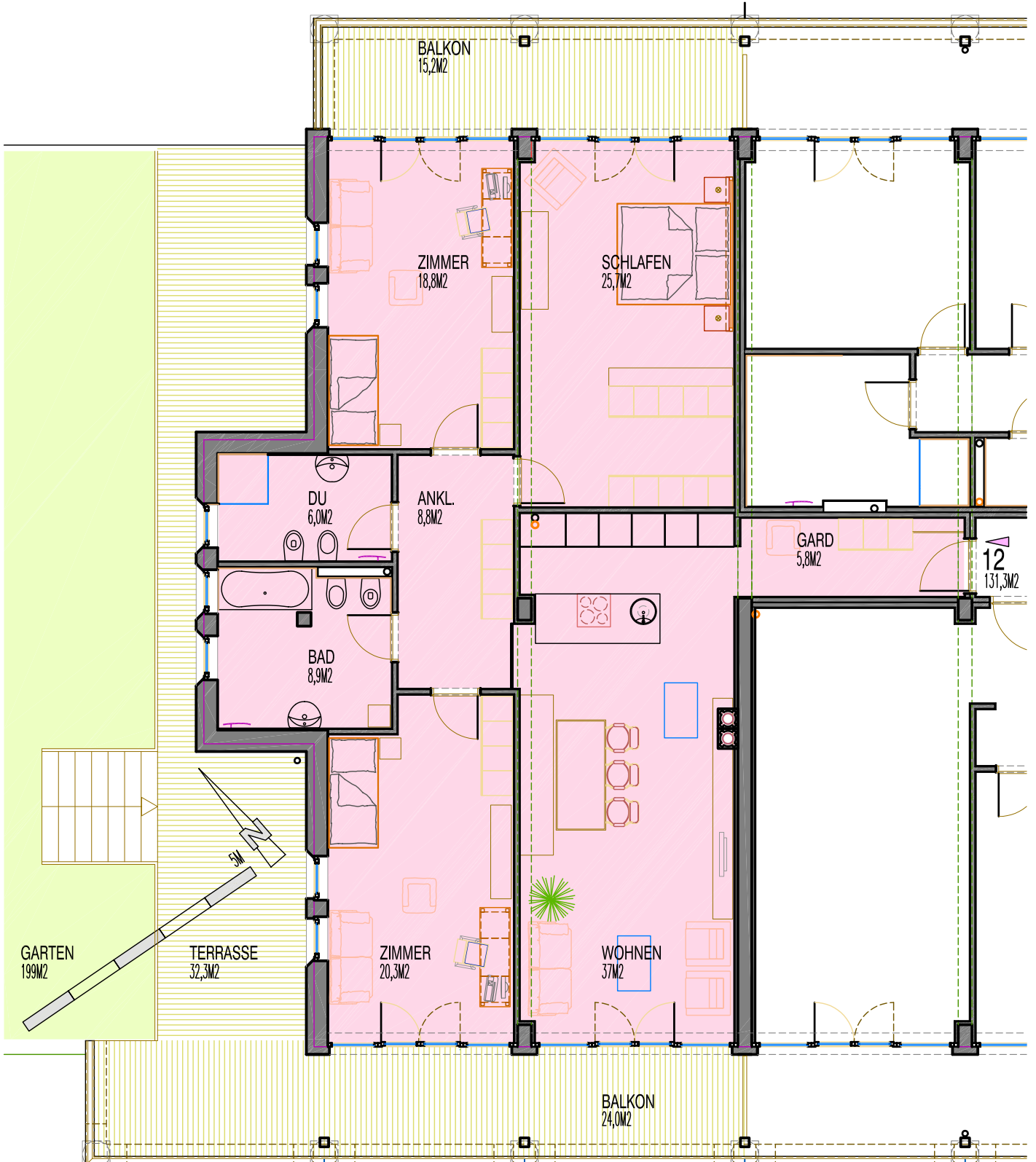
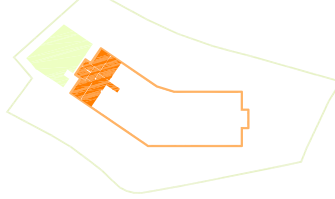
STERN RESIDENZ
OLYMPIAREGION SEEFELD
TOP 12 131,3M2

ARCHITEKT DI WOLFGANG BAUMGARTNER
A 6103 REITH BEI SEEFELD TIROL LIFTWEG 92
TELEFON 05212 3980 FAX DW 4 MOBIL 0664/3416888
e-mail arch.baumgartner@aon.at



FLÄCHEN

WOHNEN	37M2
SCHLAFEN	25,7M2
ZIMMER	20,3M2
ZIMMER	18,8M2
BAD	8,9M2
DUSCHE	6,0M2
ANKLEIDEN	8,8M2
GARDEROBE	5,8M2
WOHNNUTZFLÄCHE	131,3M2
GARTEN	199M2
BALKON TERRASSE	71,5M2
AR. KELLER CA.	4,14M2



D:\DWG\SEEFELD\MARCATI_LUIGI\Stern-Residenz\DWG\Polier\PO5_SternResidenz.dwg