



## CHALET 1

Wohnfläche / living surface / superficie calpestabile	137,80 m <sup>2</sup>
Private Gartenfläche / private garden / giardino privato	242,00 m <sup>2</sup>
Terrasse / terrace / terrazza	33,00 m <sup>2</sup>
Abstellraum / storage / ripostiglio	12,00 m <sup>2</sup>
Tiefgaragenparkplatz / underground parking space / parcheggio sotterraneo	2

### Merkmale

- eigenständiger Baukörper
- höchste Lage innerhalb des Komplexes
- unverbaubare Aussicht
- 3 Sonnenterrassen
- Aufzug
- Sichtdachstuhl
- Kaminanschluss
- Master-Bedroom und 2 Gästeschlafzimmer
- separater Wohn- und Essbereich mit Loftcharakter

### Characteristics

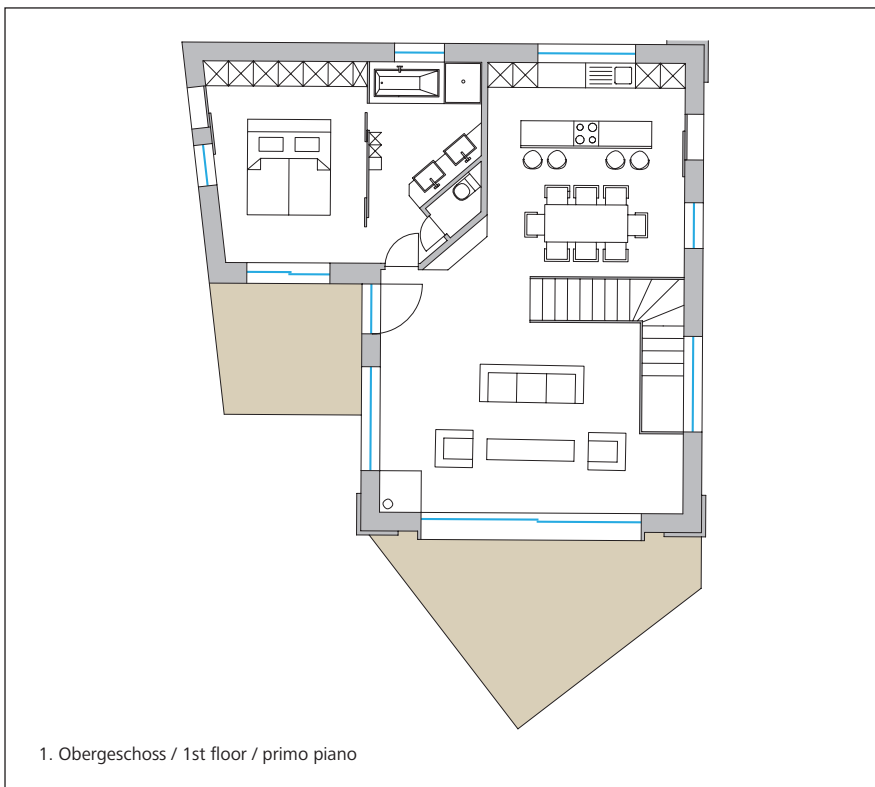
- self-contained structure
- located on the highest point of premises
- unobstructable view
- 3 sun terraces
- elevator
- visible roof truss
- chimney
- master bedroom and 2 guest rooms
- separated living and dining area

### Caratteristiche

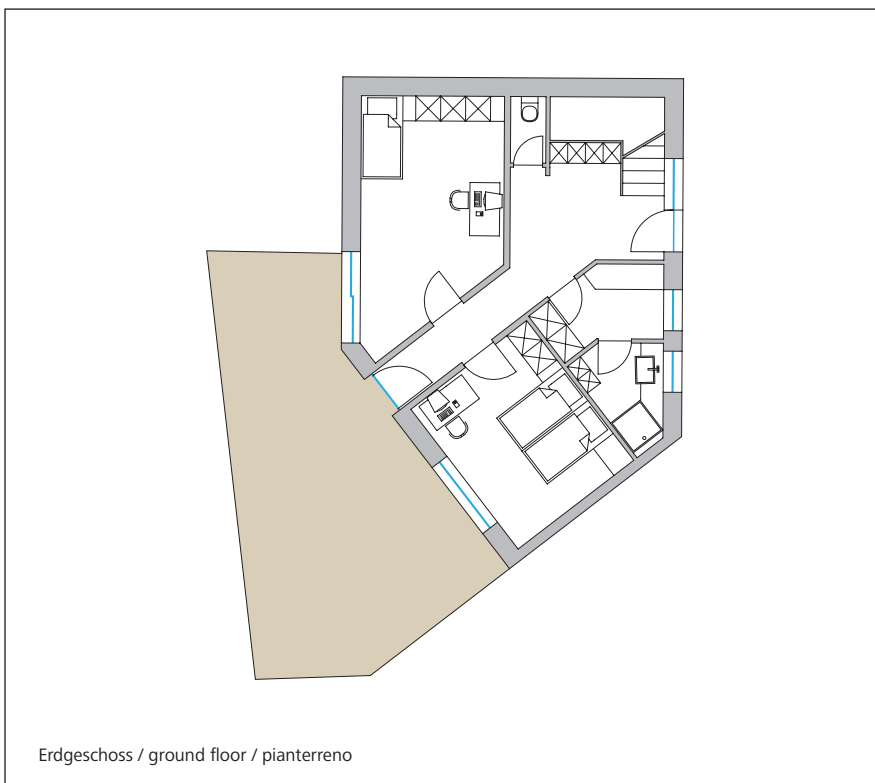
- costruzione autonoma
- posizione più alta del progetto
- con una vista panoramica, dove in futuro nessun'altra costruzione sarà realizzata
- 3 terrazze al sole
- ascensore
- capriata a vista
- predisposizione per un caminetto
- Master-Bedroom e 2 camere da letto per ospiti
- soggiorno e sala da pranzo tipo loft

### Marcati Immobilien GmbH

Innsbrucker Straße 23,  
6100 Seefeld, Austria  
T +43 (0) 676 843 004 445  
F +43 (0) 5212 43 94  
immo@marcati.at  
www.marcati-immobilien.at



1. Obergeschoss / 1st floor / primo piano



Erdgeschoss / ground floor / pianterreno



## CHALET 2

Wohnfläche / living surface / superficie calpestabile	141,70 m <sup>2</sup>
Private Gartenfläche / private garden / giardino privato	100,00 m <sup>2</sup>
Terrasse / terrace / terrazza	20,00 m <sup>2</sup>
Abstellraum / storage / ripostiglio	12,00 m <sup>2</sup>
Tiefgaragenparkplatz / underground parking space / parcheggio sotterraneo	2

### Merkmale

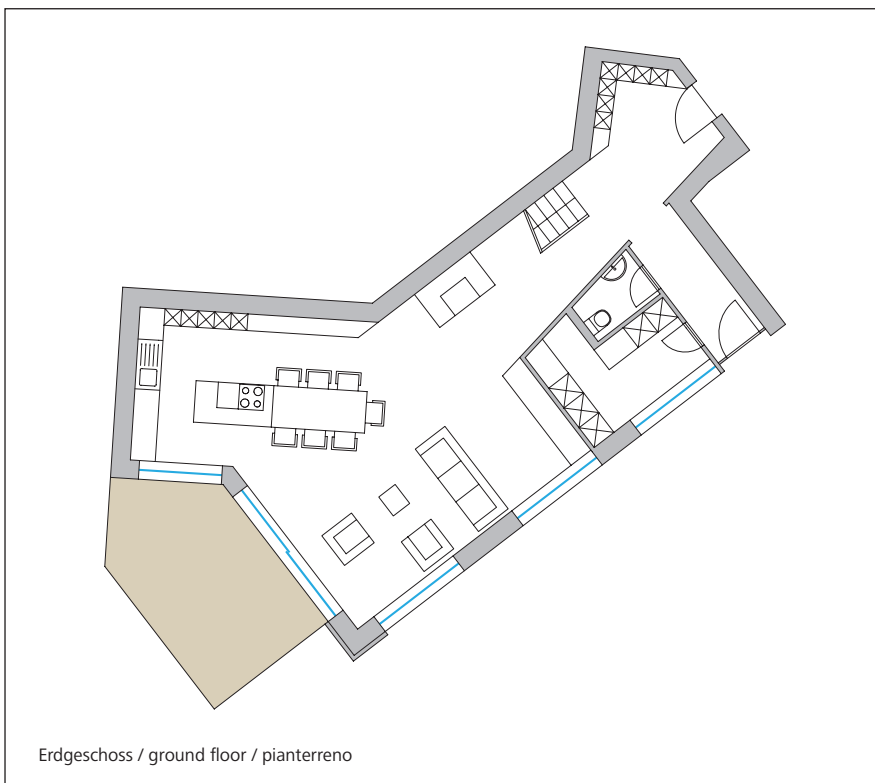
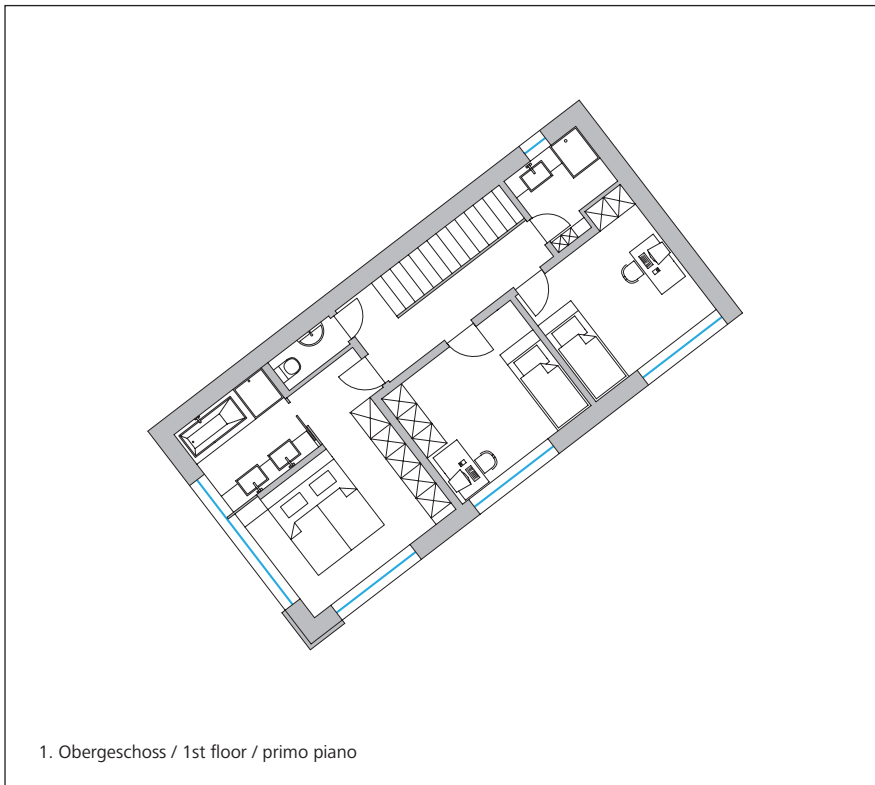
- größte Wohneinheit
- Aufzug
- 2 Etagen
- 2 Eingänge
- Master-Bedroom und 2 Gästeschlafzimmer
- Felsenküche
- Kaminanschluss

### Characteristics

- biggest accommodation unit
- elevator
- 2 floors
- 2 entrances
- master bedroom and 2 guest rooms
- kitchen built into a rock
- chimney

### Caratteristiche

- unità residenziale più grande
- ascensore
- 2 piani
- 2 entrate
- Master-Bedroom e 2 camere da letto per ospiti
- cucina di roccia
- predisposizione per un caminetto



### Marcati Immobilien GmbH

Innsbrucker Straße 23,  
6100 Seefeld, Austria  
T +43 (0) 676 843 004 445  
F +43 (0) 5212 43 94  
immo@marcati.at  
www.marcati-immobilien.at



## CHALET 3

Wohnfläche / living surface / superficie calpestabile	122,70 m <sup>2</sup>
Private Gartenfläche / private garden / giardino privato	208,00 m <sup>2</sup>
Terrasse / terrace / terrazza	20,00 m <sup>2</sup>
Abstellraum / storage / ripostiglio	12,00 m <sup>2</sup>
Tiefgaragenparkplatz / underground parking space / parcheggio sotterraneo	2

### Merkmale

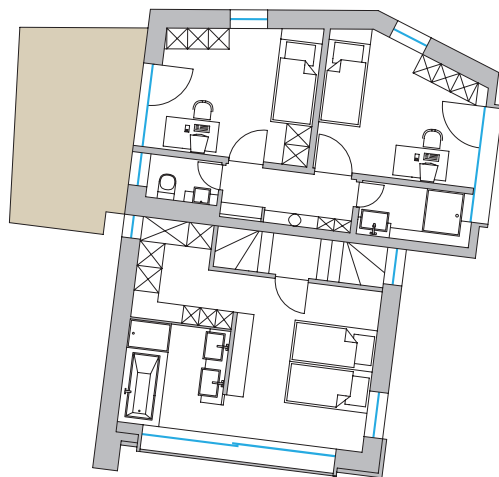
- eigenständiger Baukörper
- Mezzanin-Wohnung über 4 Ebenen
- 3 Sonnenterrassen
- Sichtdachstühle
- Aufzug
- sehr großer Garten
- Kaminanschluss

### Characteristics

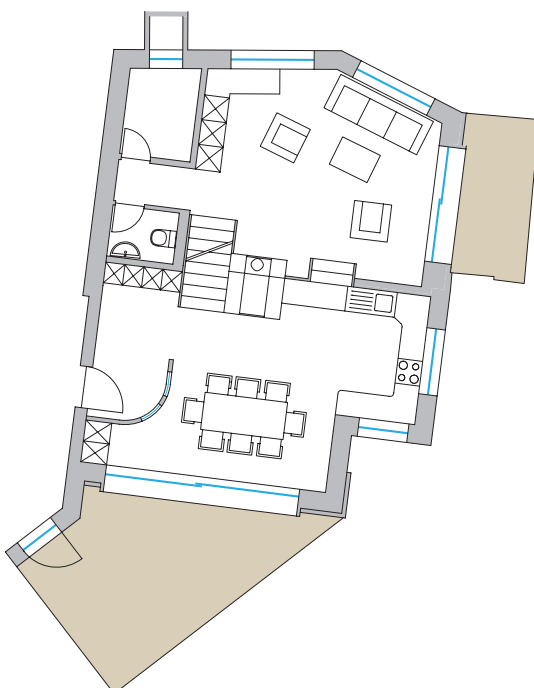
- self-contained structure
- mezzanine apartment on 4 floors
- 3 sun terraces
- visible roof truss
- elevator
- large garden
- chimney

### Caratteristiche

- costruzione autonoma
- appartamento ammezzato su 4 piani
- 3 terrazze
- capriate a vista
- ascensore
- giardino grande
- predisposizione per un caminetto



2. & 3. Obergeschoss / 2nd & 3rd floor / secondo & terzo piano



Erdgeschoss & 1. Obergeschoss / ground floor & 1st floor / pianterreno & primo piano

### Marcati Immobilien GmbH

Innsbrucker Straße 23,  
6100 Seefeld, Austria  
T +43 (0) 676 843 004 445  
F +43 (0) 5212 43 94  
immo@marcati.at  
www.marcati-immobilien.at



## CHALET 4

Wohnfläche / living surface / superficie calpestabile	140,90 m <sup>2</sup>
Private Gartenfläche / private garden / giardino privato	68,00 m <sup>2</sup>
Terrasse / terrace / terrazza	16,00 m <sup>2</sup>
Abstellraum / storage / ripostiglio	12,00 m <sup>2</sup>
Tiefgaragenparkplatz / underground parking space / parcheggio sotterraneo	2

### Merkmale

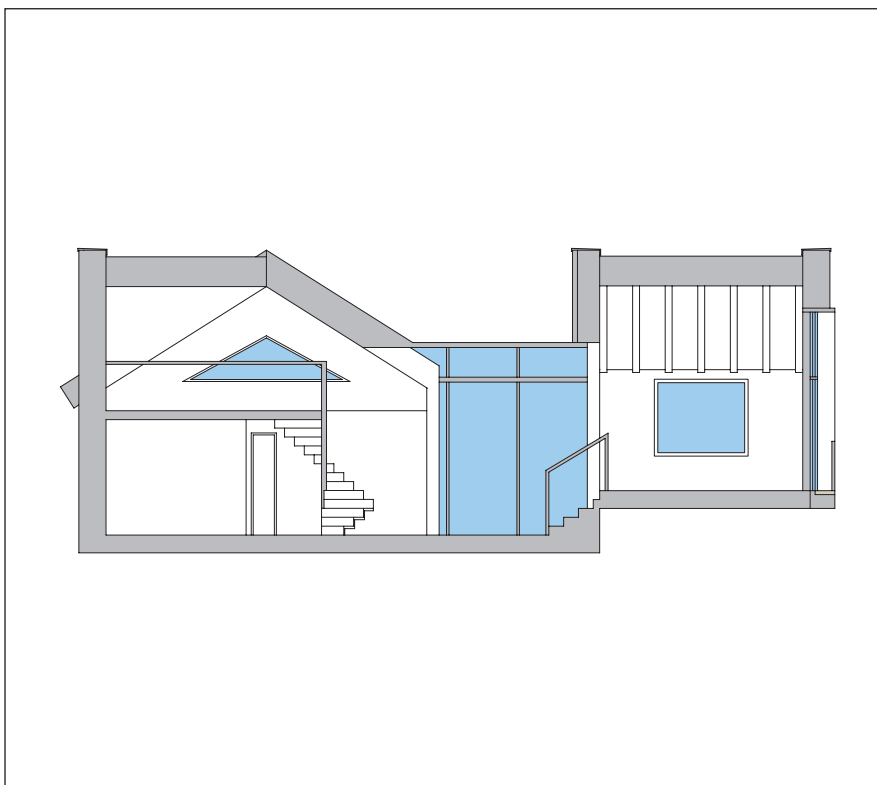
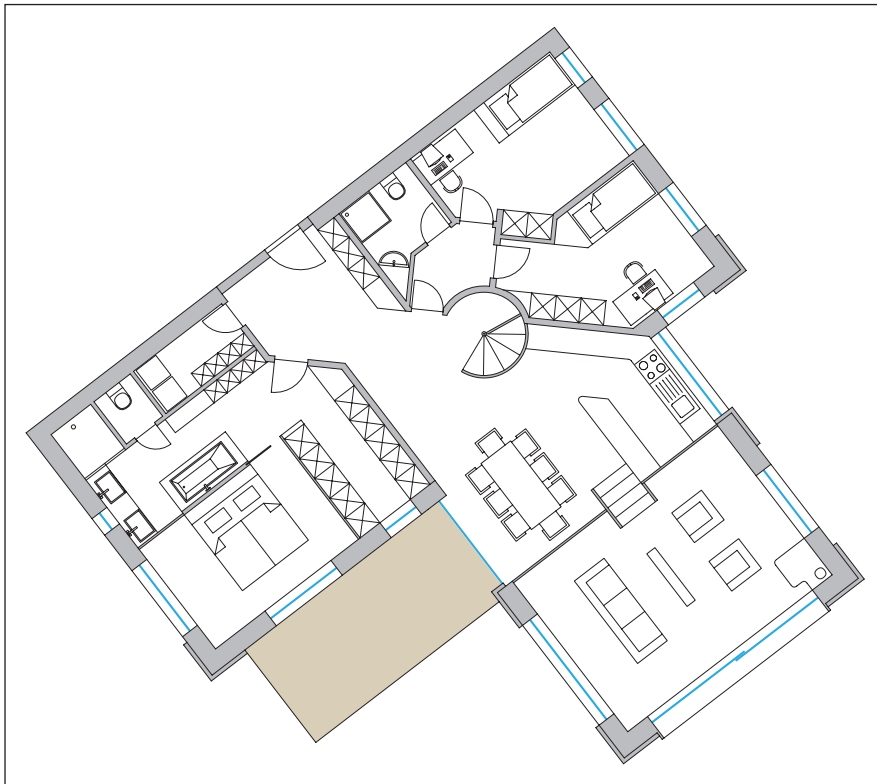
- Loftcharakter
- Wohnen auf 2 Ebenen
- Zugang zum Garten über Galerie im offenen Dachstuhl
- Koch- und Essbereich im Wintergarten
- unverbaubare Aussicht
- Sichtdachstühle

### Characteristics

- loft character
- living on 2 floors
- direct access to garden via the gallery in the open roof truss
- cooking and dining area in the conservatory
- unobstructable view
- visible roof truss

### Caratteristiche

- tipo loft
- 2 piani
- accesso al giardino attraverso la galleria della capriata a vista
- cucina e sala da pranzo in veranda
- con una vista panoramica, dove in futuro nessun'altra costruzione sarà realizzata
- capriate a vista



### Marcati Immobilien GmbH

Innsbrucker Straße 23,  
6100 Seefeld, Austria  
T +43 (0) 676 843 004 445  
F +43 (0) 5212 43 94  
immo@marcati.at  
www.marcati-immobilien.at



## CHALET 5

Wohnfläche / living surface / superficie calpestabile	80,70 m <sup>2</sup>
Private Gartenfläche / private garden / giardino privato	48,00 m <sup>2</sup>
Terrasse / terrace / terrazza	68,00 m <sup>2</sup>
Abstellraum / storage / ripostiglio	12,00 m <sup>2</sup>
Tiefgaragenparkplatz / underground parking space / parcheggio sotterraneo	2

### Merkmale

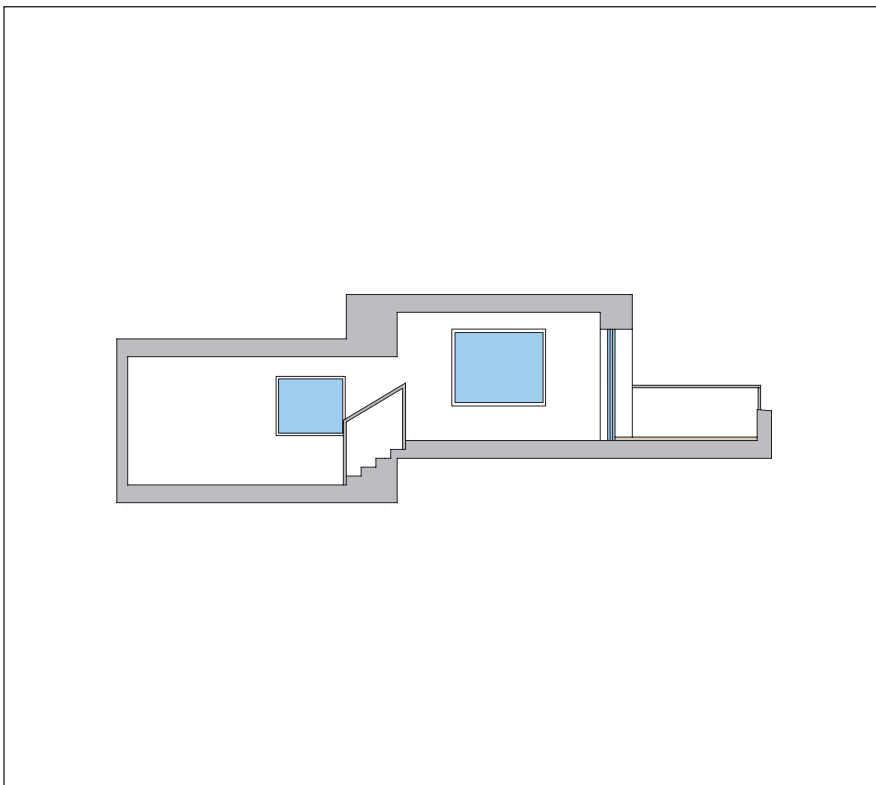
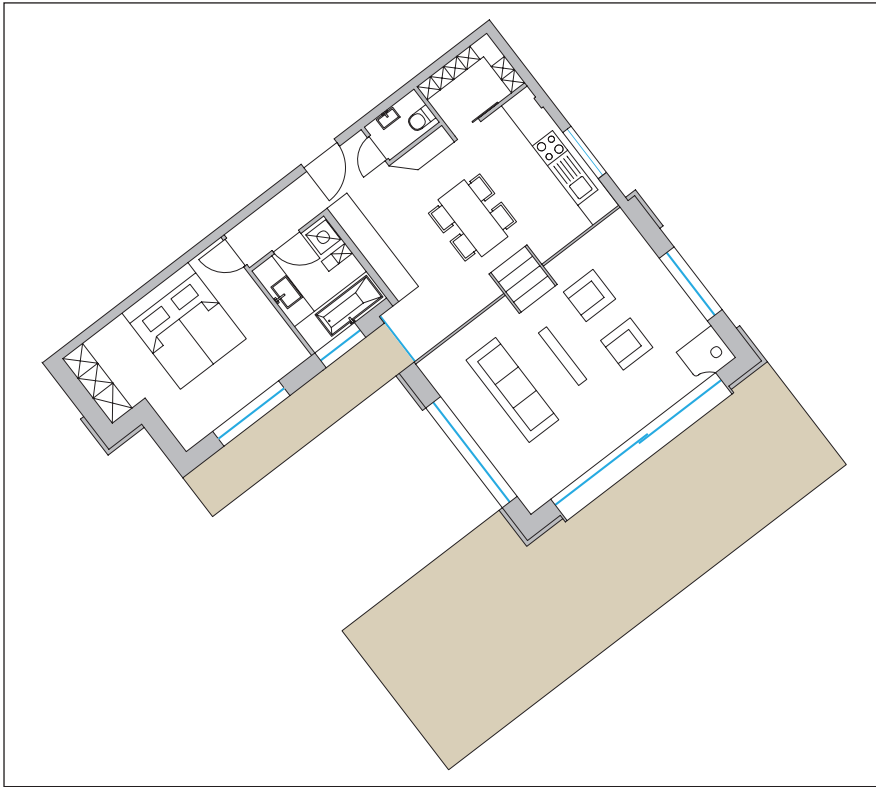
- große Sonnenterrasse
- Loftcharakter
- Wohnen auf 2 Ebenen
- Kaminanschluss
- Felsenküche

### Characteristics

- big sun terrace
- loft character
- living on 2 floors
- chimney
- kitchen built into a rock

### Caratteristiche

- grande terrazza al sole
- tipo loft
- 2 piani
- predisposizione per un caminetto
- cucina di roccia



### Marcati Immobilien GmbH

Innsbrucker Straße 23,  
6100 Seefeld, Austria  
T +43 (0) 676 843 004 445  
F +43 (0) 5212 43 94  
immo@marcati.at  
www.marcati-immobilien.at



## CHALET 6

Wohnfläche / living surface / superficie calpestabile	126,60 m <sup>2</sup>
Private Gartenfläche / private garden / giardino privato	174,00 m <sup>2</sup>
Terrasse / terrace / terrazza	52,00 m <sup>2</sup>
Abstellraum / storage / ripostiglio	12,00 m <sup>2</sup>
Tiefgaragenparkplatz / underground parking space / parcheggio sotterraneo	2

### Merkmale

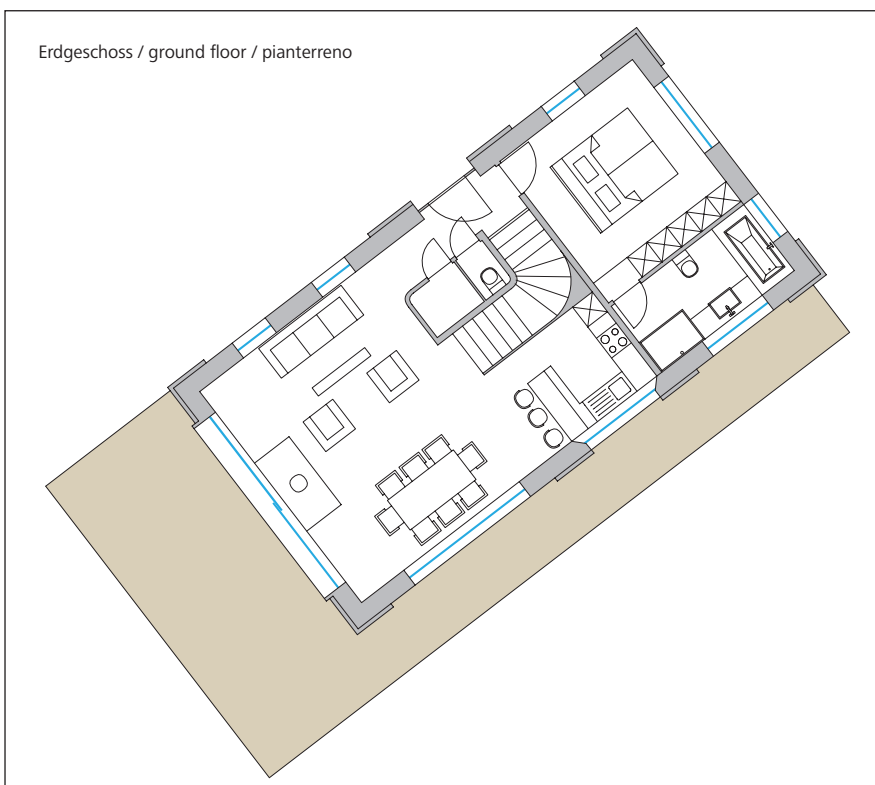
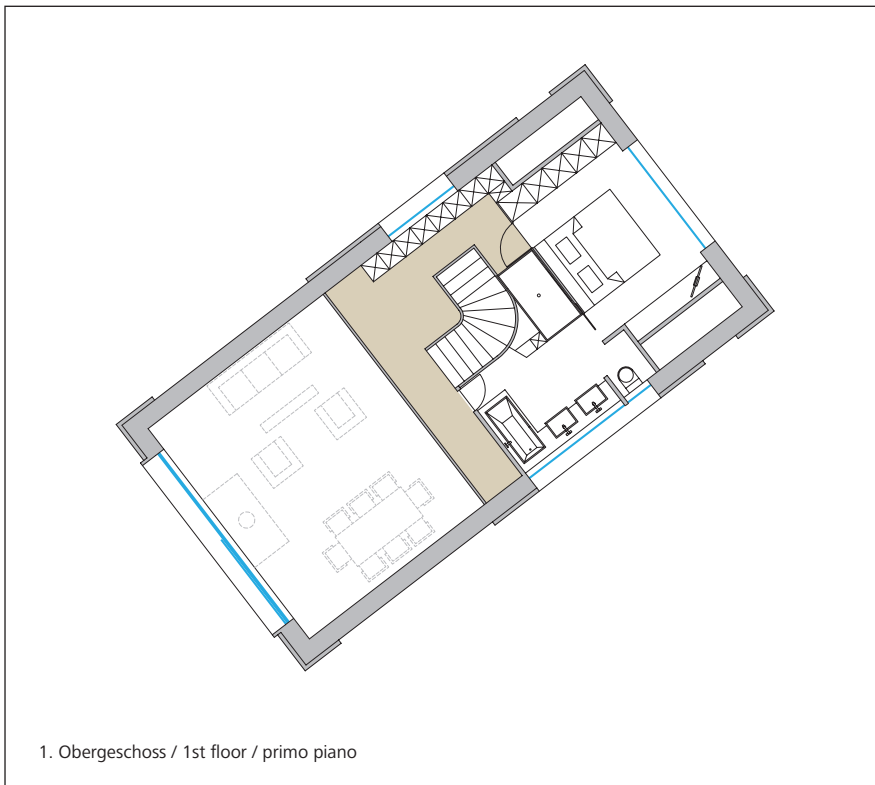
- frei stehendes Haus
- 2 Etagen
- behindertengerecht konzipiert
- Chalet mit den meisten Sonnenstunden
- Loftcharakter
- sehr große Terrasse und großzügiger Garten

### Characteristics

- detached house
- 2 floors
- wheelchair accessible
- chalet with the most sun
- loft character
- large garden & terrace

### Caratteristiche

- casa autonoma
- 2 piani
- concepita a misura di disabile
- chalet in posizione soleggiata
- tipo loft
- con una terrazza molto grande ed ampio giardino



### Marcati Immobilien GmbH

Innsbrucker Straße 23,  
6100 Seefeld, Austria  
T +43 (0) 676 843 004 445  
F +43 (0) 5212 43 94  
immo@marcati.at  
www.marcati-immobilien.at



## LODGE 1

Wohnfläche / living surface / superficie calpestabile	68,10 m <sup>2</sup>
Terrasse / terrace / terrazza	9,00 m <sup>2</sup>
Abstellraum / storage / ripostiglio	4,00 m <sup>2</sup>
Tiefgaragenparkplatz / underground parking space / parcheggio sotterraneo	1

### Merkmale

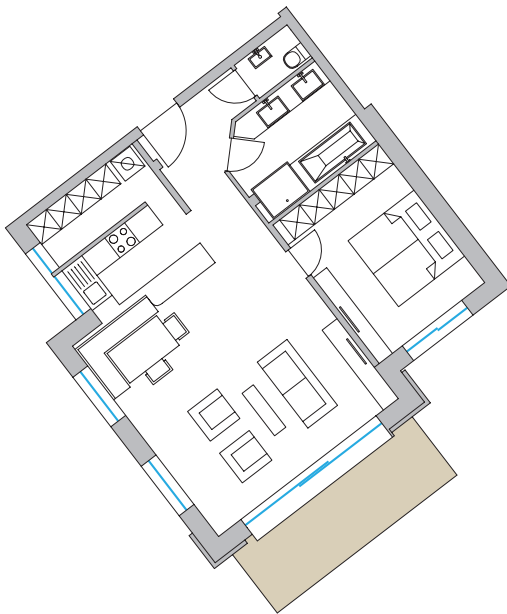
- große Sonnenterrasse
- Loftcharakter
- offener Dachstuhl
- großer Balkon

### Characteristics

- large sun terrace
- loft character
- open roof truss
- spacious balcony

### Caratteristiche

- grande terrazza al sole
- tipo loft
- capriate a vista
- grande balcone



### Marcati Immobilien GmbH

Innsbrucker Straße 23,  
6100 Seefeld, Austria  
T +43 (0) 676 843 004 445  
F +43 (0) 5212 43 94  
immo@marcati.at  
www.marcati-immobilien.at



## LODGE 2

Wohnfläche / living surface / superficie calpestabile	71,00 m <sup>2</sup>
Private Gartenfläche / private garden / giardino privato	139,00 m <sup>2</sup>
Terrasse / terrace / terrazza	9,00 m <sup>2</sup>
Abstellraum / storage / ripostiglio	4,00 m <sup>2</sup>
Tiefgaragenparkplatz / underground parking space / parcheggio sotterraneo	1

### Merkmale

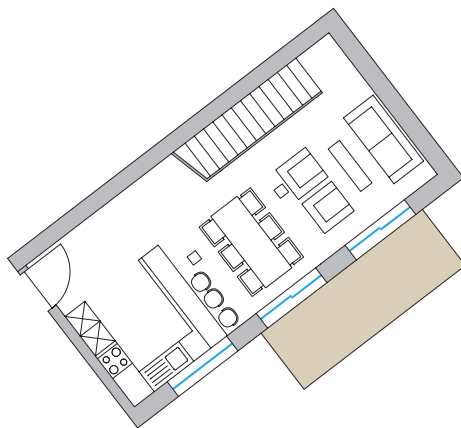
- großer Garten
- Sonnenterrasse
- Kaminanschluss
- unverbaubare Aussicht
- 2 Wohnebenen

### Characteristics

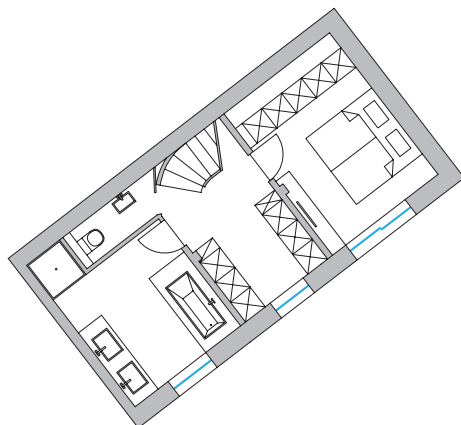
- large garden
- sun terrace
- chimney
- unobstructable view
- duplex apartment

### Caratteristiche

- grande giardino
- terrazza al sole
- predisposizione per un caminetto
- con una vista panoramica, dove in futuro nessun'altra costruzione sarà realizzata
- 2 piani



1. Obergeschoss / 1st floor / primo piano



Erdgeschoss / ground floor / pianterreno

### Marcati Immobilien GmbH

Innsbrucker Straße 23,  
6100 Seefeld, Austria  
T +43 (0) 676 843 004 445  
F +43 (0) 5212 43 94  
immo@marcati.at  
www.marcati-immobilien.at



## LODGE 3

Wohnfläche / living surface / superficie calpestabile	68,10 m <sup>2</sup>
Private Gartenfläche / private garden / giardino privato	84,00 m <sup>2</sup>
Terrasse / terrace / terrazza	10,00 m <sup>2</sup>
Abstellraum / storage / ripostiglio	4,00 m <sup>2</sup>
Tiefgaragenparkplatz / underground parking space / parcheggio sotterraneo	1

### Merkmale

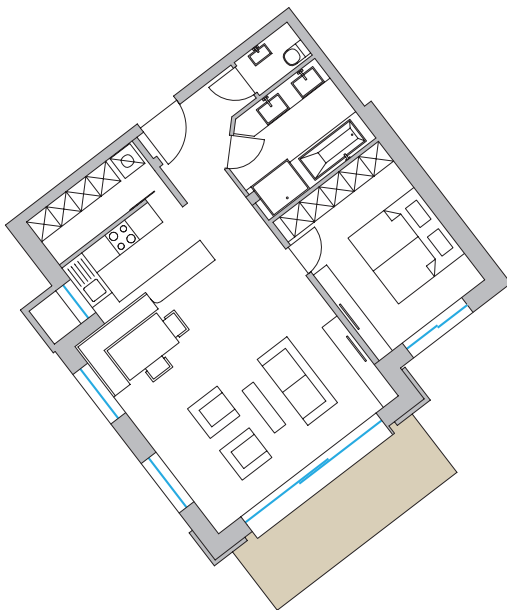
- Maisonette-Wohnung
- Loftcharakter
- großer Sonnenbalkon
- unverbaubare Aussicht

### Characteristics

- maisonette apartment
- loft character
- spacious sun balcony
- unobstructable view

### Caratteristiche

- appartamento Maisonette
- tipo loft
- grande balcone
- con una vista panoramica, dove in futuro nessun'altra costruzione sarà realizzata



### Marcati Immobilien GmbH

Innsbrucker Straße 23,  
6100 Seefeld, Austria  
T +43 (0) 676 843 004 445  
F +43 (0) 5212 43 94  
immo@marcati.at  
www.marcati-immobilien.at



## LODGE 4

Wohnfläche / living surface / superficie calpestabile	70,50 m <sup>2</sup>
Private Gartenfläche / private garden / giardino privato	71,00 m <sup>2</sup>
Terrasse / terrace / terrazza	16,00 m <sup>2</sup>
Abstellraum / storage / ripostiglio	4,00 m <sup>2</sup>
Tiefgaragenparkplatz / underground parking space / parcheggio sotterraneo	1

### Merkmale

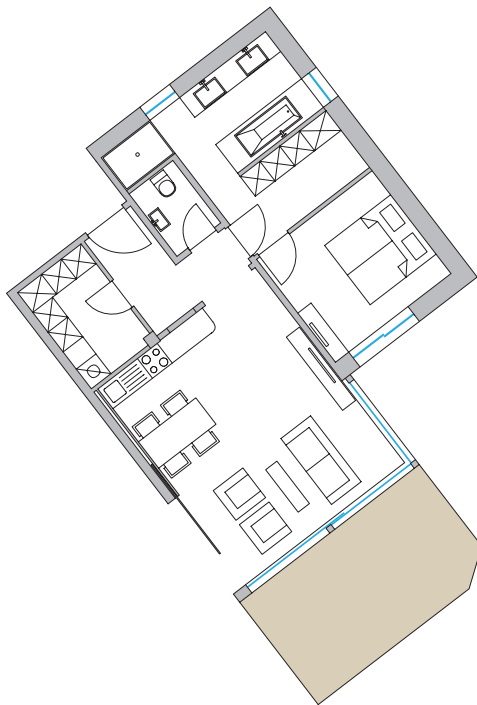
- großzügige Garten- und Terrassenflächen
- Wintergarten
- mit Lodge 5 kombinierbar
- unverbaubare Aussicht

### Characteristics

- spacious garden and terrace area
- conservatory
- combinable with lodge 5
- unobstructable view

### Caratteristiche

- ampio giardino e terrazza
- veranda
- possibilità di combinare con Lodge 5
- con una vista panoramica, dove in futuro nessun'altra costruzione sarà realizzata



### Marcati Immobilien GmbH

Innsbrucker Straße 23,  
6100 Seefeld, Austria  
T +43 (0) 676 843 004 445  
F +43 (0) 5212 43 94  
immo@marcati.at  
www.marcati-immobilien.at



## LODGE 5

Wohnfläche / living surface / superficie calpestabile	69,80 m <sup>2</sup>
Private Gartenfläche / private garden / giardino privato	129,00 m <sup>2</sup>
Terrasse / terrace / terrazza	16,00 m <sup>2</sup>
Abstellraum / storage / ripostiglio	4,00 m <sup>2</sup>
Tiefgaragenparkplatz / underground parking space / parcheggio sotterraneo	1

### Merkmale

- unverbaubare Aussicht
- großzügige Garten- und Terrassenflächen
- Wintergarten
- mit Lodge 4 kombinierbar

### Characteristics

- unobstructable view
- spacious garden and terrace area
- conservatory
- combinable with lodge 4

### Caratteristiche

- con una vista panoramica, dove in futuro nessun'altra costruzione sarà realizzata
- ampio giardino e terrazza
- veranda
- predisposizione per un caminetto



### Marcati Immobilien GmbH

Innsbrucker Straße 23,  
6100 Seefeld, Austria  
T +43 (0) 676 843 004 445  
F +43 (0) 5212 43 94  
immo@marcati.at  
www.marcati-immobilien.at