



CHALET 4

Wohnfläche / living surface / superficie calpestabile	140,90 m ²
Private Gartenfläche / private garden / giardino privato	68,00 m ²
Terrasse / terrace / terrazza	16,00 m ²
Abstellraum / storage / ripostiglio	12,00 m ²
Tiefgaragenparkplatz / underground parking space / parcheggio sotterraneo	2

Merkmale

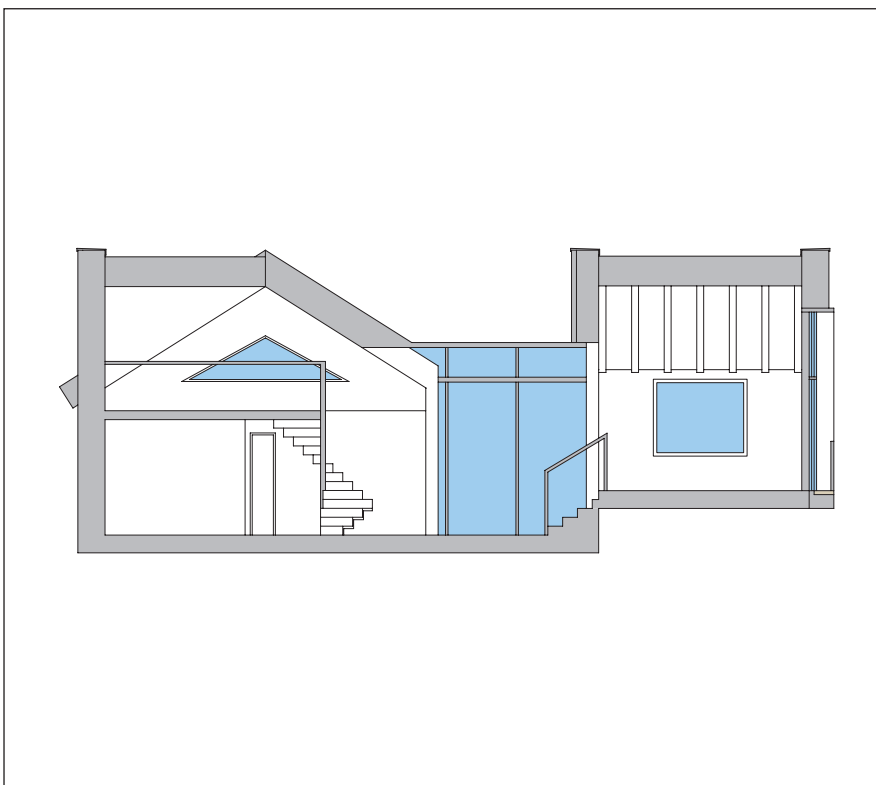
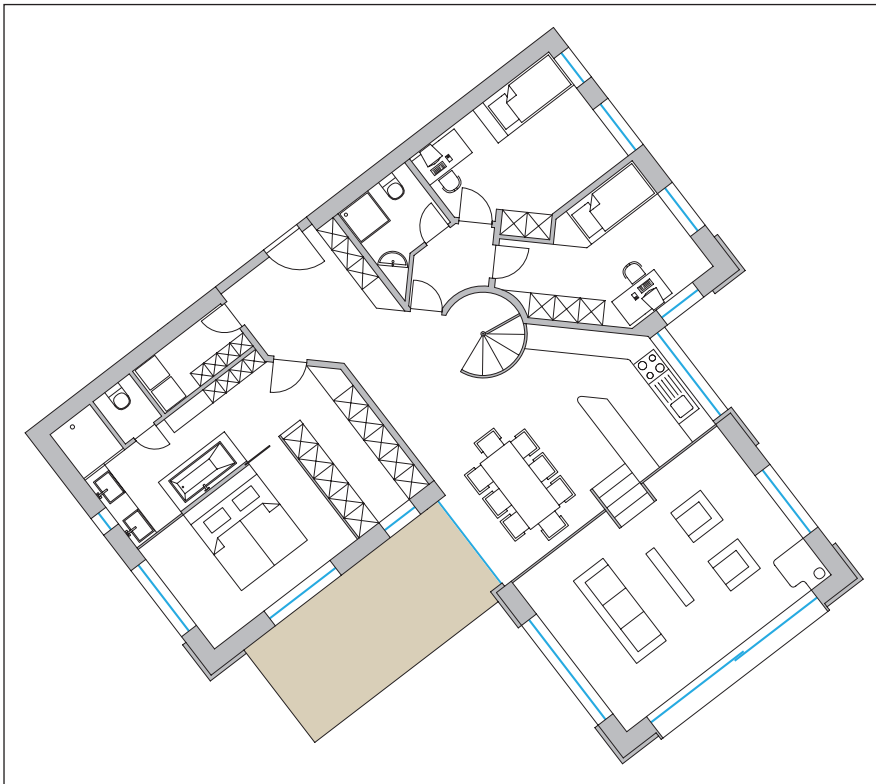
- Loftcharakter
- Wohnen auf 2 Ebenen
- Zugang zum Garten über Galerie im offenen Dachstuhl
- Koch- und Essbereich im Wintergarten
- unverbaubare Aussicht
- Sichtdachstühle

Characteristics

- loft character
- living on 2 floors
- direct access to garden via the gallery in the open roof truss
- cooking and dining area in the conservatory
- unobstructable view
- visible roof truss

Caratteristiche

- tipo loft
- 2 piani
- accesso al giardino attraverso la galleria della capriata a vista
- cucina e sala da pranzo in veranda
- con una vista panoramica, dove in futuro nessun'altra costruzione sarà realizzata
- capriate a vista



Marcati Immobilien GmbH

Innsbrucker Straße 23,
6100 Seefeld, Austria
T +43 (0) 676 843 004 445
F +43 (0) 5212 43 94
immo@marcati.at
www.marcati-immobilien.at